

Western Blotting Substrates from KPL

Push your blot sensitivity!

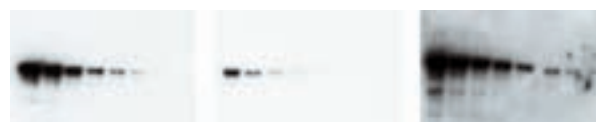


	SUBSTRATE	DETECTION LIMIT	SIGNAL	ENZYME
CHEMI	LumiGLO Reserve	femtogram	4 - 8 hours glow	HRP
	LumiGLO	picogram	1 - 2 hours glow	HRP
	PhosphaGLO Reserve	femtogram	5 days glow	AP
	PhosphaGLO	picogram	5 days glow	AP
COLOUR	TMB Membrane	low picogram	stable precipitate	HRP
	BCIP/NBT	low picogram	stable precipitate	AP

- Choice of peroxidase or phosphatase detection
- Colorimetric and chemiluminescent substrates
- Strong signal achieved with the use of reduced amounts of precious target & antibodies
- Convenient, ready-to-use solutions
- Western kits contain substrates, blocking and washing agents and 2° Abs

DESCRIPTION	CAT. NO.	SPECIAL
LumiGLO Chemi. Substrate (2 comp), 240mL	KP-54-61-00	\$151.20
LumiGLO Western Blotting Kit, 2500cm ²	KP-54-12-50	482.80
LumiGLO Reserve Chemi. Substrate (2 comp), 2400cm ²	KP-54-71-00	476.00
LumiGLO Reserve Chemi. Substrate (2 comp), 600cm ²	KP-54-71-01	178.50
LumiGLO Reserve Western Blotting Kit, 2400cm ²	KP-54-13-50	723.10
PhosphaGLO AP Substrate, 100mL	KP-55-60-04	268.80
PhosphaGLO Reserve AP Substrate, 100mL	KP-55-60-02	399.70
TMB Membrane Substrate (1 comp), 200mL	KP-50-77-03	90.30
TMB Membrane Substrate (1 comp), 1L	KP-50-77-04	326.90
TMB Membrane Substrate (1 comp), 100mL	KP-50-77-18	56.00
TMB Western Blot Kit, 2500cm ²	KP-54-11-50	368.90
BCIP/NBT Substrate, (one comp) 100mL	KP-50-81-18	49.70
BCIP/NBT Western Blot Kit, 2500cm ²	KP-55-11-50	368.90

Comparison of low-end sensitivity using LumiGLO Reserve and ECL Substrates



LumiGLO Reserve ECL Plus ECL Advance

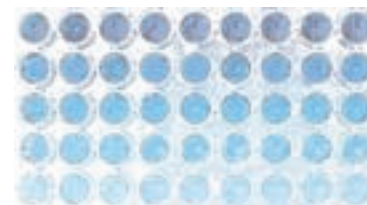
FREE SUBSTRATE TRIAL PROGRAM!

Please contact your local sales rep or call 1-888-883-3636 for more information.



ELISA Substrates from KPL

Pump up your signal!



ABTS Substrates

- Excellent linearity; provides the widest working range of any chromogenic HRP substrate
- Supplied as ready-to-use or as an extremely stable 2-component product
- Ideal for kinetic assays

- Choice of peroxidase or phosphatase detection
- Chromogenic and chemiluminescent substrates
- Convenient, ready-to-use solutions

SureBlue Reserve

- Develops deep blue colour measurable at 650nm
- Recommended for both kinetic and endpoint ELISAs

TMB Substrate

- Excellent stability and sensitivity
- Economical choice when ready-to-use convenience is not required
- Choose between 2- or 3-component and convenient 1-component format

DESCRIPTION	CAT. NO.	SPECIAL
SureBlue Reserve TMB Microwell Substrate (1 comp), 100mL	KP-53-00-01	\$51.30
SureBlue Reserve TMB Microwell Substrate (1 comp), 4 x 100mL	KP-53-00-02	171.00
SureBlue Reserve TMB Microwell Substrate (1 comp), 1000mL	KP-53-00-03	297.90
TMB Microwell Substrate (1 comp), 100mL	KP-52-00-01	41.30
TMB Microwell Substrate (1 comp), 400mL	KP-52-00-02	147.70
TMB Microwell Substrate (1 comp), 1000mL	KP-52-00-03	234.50
TMB Microwell Substrate (1 comp), 5000mL	KP-52-00-04	877.80
TMB Microwell Substrate (2 comp), 600mL	KP-50-76-00	142.20
TMB Microwell Substrate (2 comp), 2700mL	KP-50-76-03	539.10
ABTS Microwell Substrate (1 comp), 100mL	KP-50-66-18	41.30
ABTS Microwell Substrate (1 comp), 600mL	KP-50-66-00	168.00
ABTS Microwell Substrate (1 comp), 1000mL	KP-50-66-06	248.00
ABTS Substrate System (2 comp), 600mL	KP-50-62-00	144.00
ABTS Substrate System (2 comp), 2700mL	KP-50-62-01	434.00

KPL's Affinity Purified Antibodies

Serum adsorbed secondary antibodies

- HSA: Affinity purified against immobilized human serum proteins
- RbSA: Affinity purified against rabbit serum proteins
- MSA: Affinity purified against mouse serum proteins



For the complete listing of KPL Antibodies & Conjugates, please contact Technical Support at 1-888-883-3636 or email technicalsupport@mandel.ca

FREE ANTIBODY TRIAL PROGRAM!

Please contact your local sales rep or call 1-888-883-3636 for more information.

Horse Radish Peroxidase (HRP) – Labelled Antibodies

DESCRIPTION	CAT. NO.	SPECIAL
Goat Anti-Human IgG(H+L), 1.0mg	KP-074-1006	\$68.60
Goat Anti-Mouse IgG(H+L), HSA, 1.0mg	KP-074-1806	64.40
Goat Anti-Rabbit IgG(H+L), 1.0mg	KP-074-1506	68.60

Unlabelled Antibodies

DESCRIPTION	CAT. NO.	SPECIAL
Goat Anti-Human IgG (H+L), 1.0mg	KP-01-10-06	\$52.50
Goat Anti-Mouse IgG (H+L), HSA, 1.0mg	KP-01-18-06	50.40
Goat Anti-Rabbit IgG (H+L), HSA, 1.0mg	KP-01-15-16	58.80

Biotin-labelled Antibodies

DESCRIPTION	CAT. NO.	SPECIAL
Goat Anti-Human IgG(H+L), 0.5mg	KP-16-10-06	\$47.60
Goat Anti-Mouse IgG(H+L) HSA, 2.0mg	KP-176-1806	112.70
Goat Anti-Rabbit IgG(H+L), 2.0mg	KP-176-1506	112.70

Dylight 488-labelled Antibodies

DESCRIPTION	CAT. NO.	SPECIAL
Goat Anti-Human IgG (H+L), 1.0mg	KP-072-03-10-06	\$150.50
Goat Anti-Mouse IgG (H+L), HSA, 1.0mg	KP-072-03-18-06	150.50
Goat Anti-Rabbit IgG (H+L), HSA, 1.0mg	KP-072-03-15-16	179.90

In addition to commonly used secondary antibodies, KPL's product range includes secondary antibodies to cat, chicken, deer, dog, duck, ferret, guinea pig, hamster, horse, raccoon, turkey and more...

TrueBlue® TMB Peroxidase Substrate

TrueBlue peroxidase substrate is a highly sensitive chromogenic substrate for visualization of horseradish peroxidase-labelled reporter reagents.

- Produces a brilliant blue specific stain
- Provides excellent contrast with red counterstains
- Buffered solution containing 3,3',5,5'-tetramethylbenzidine (TMB) and H₂O₂
- Excellent for cellular preparations and immunoblotting procedures
- Free of known carcinogens



DESCRIPTION	CAT. NO.	SPECIAL
TrueBlue Substrate, 10mL (trial size)	KP-71-00-67	\$21.70
TrueBlue Substrate, 50mL (125 to 250 slides)	KP-71-00-64	49.70
TrueBlue Substrate, 200mL (500 to 1,000 slides)	KP-50-78-02	133.00

Gel-loading Pipette Tips



US-1022-0600

DESCRIPTION	CAT. NO.	SPECIAL
Gel Loading 1–200µL round tip, 0.54mm OD, 5 racks of 204 tips, 1,020/pk.	US-1022-0600	\$72.80
Gel Loading 1–200µL round tip, 0.54mm OD, 5 racks of 204 tips, sterile 1,020/pk.	US-1022-0610	88.90
Gel Loading 1–200µL round tip, 0.54mm OD, bulk pkg. 1,000 tips	US-1022-0000	49.00
Gel Loading 1–100µL round filter tip, 0.54mm OD, 5 racks of 204, sterile, 1,020/pk.	US-1022-0810	121.80
Gel Loading 1–200µL round tip, 0.57mm OD, 200 tips/rack	US-1252-0600	31.50
Gel Loading 0.5–200µL flat tip, 0.4mm OD, 200 tips/rack	US-1022-4600	58.80



Mandel Agarose

Mandel agarose is refined using an advanced process that excludes the use of organic solvents, yielding a cleaner end-product with a significantly reduced environmental impact.

SPECIAL
\$199
for 500g!

- Multi-purpose, high purity
- Enhanced resolution and clarity
- Reduced background
- Low EEO/increased electrophoretic mobility
- RNase, DNase, Protease-free
- High hysteresis, improved thermal stability
- Used for analyses of proteins and nucleic acids of various sizes (150 bp to 6 kbp)



Specifications	
Gel Strength	≥1200g/cm ² (1%)
Gel Temperature	36°C ±1.5°C (1.5%)
Melt Temperature	86°C ±1.5°C (1.5%)
EEO(-mr)	10.13
Moisture Content	≤7%
Sulphate	≤0.2%

DESCRIPTION	CAT. NO.	SPECIAL
Agarose LE, Organic Solvent Free, 500g	DEL-5000	\$199.00

Ammonium Persulfate & TEMED

Fast & easy polymerization of acrylamide mixtures

- No weighing – ready-to-use tablets!

DESCRIPTION	CAT. NO.	SPECIAL
Ammonium Persulfate (APS), 100mg tablets	AMR-K833-100TABS	\$34.00
Ammonium Persulfate (APS)	AMR-0486-25G	14.00
	AMR-0486-100G	29.00
	AMR-0761-25ML	19.00
TEMED	AMR-0761-50ML	31.00
	AMR-0761-100ML	52.00
APS/TEMED tablets	AMR-N310-100TAB	72.00

Ethidium Bromide Solutions

Eliminate hazardous shipping fees!

Destaining Bags

Safe, easy-to-use dropper bottle

For ethidium bromide

DESCRIPTION	CAT. NO.	SPECIAL
Ethidium Bromide, Dropper Bottle (0.625mg/mL) A safe solution for easy gel preparation, use 1 drop per 50mL of gel	AMR-E406-5ML	\$23.00
Ethidium Bromide, Stock Solution (10mg/mL) A convenient stock concentrate	AMR-X328-10ML	31.00
Destaining Bags – 25 bags	AMR-E732-25	86.00

EZ-VISION™

Fluorescent Dye as Loading Buffer

EZ-Vision™ is a non-mutagenic, fluorescent reagent that produces instant visualization of DNA bands upon UV illumination of agarose gels. Supplied in Amresco's 6X DNA Loading Buffer

EZ-Vision Three:

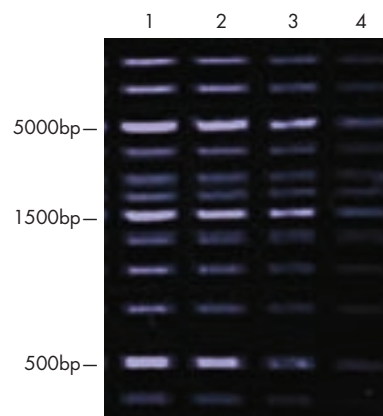
Includes 3 tracking dyes that migrate at 4000bp, 400bp, and 10bp on a 1% agarose gel

EZ-Vision Two:

Includes 2 tracking dyes that migrate at 4000bp and 400bp on a 1% agarose gel

EZ-Vision One:

Includes 1 tracking dye that migrates at 10bp on a 1% agarose gel



EZ-Vision-stained 1kb ladder.
 Results – Courtesy of Dr. Mary Cismowski at NEOUCOM.
 EZ-Vision staining of 1kb DNA ladder on 1% agarose gel run in TAE buffer. Markers were mixed with EZ-Vision™ and aliquots were loaded as follows:
 Lane 1: 1.00µg,
 Lane 2: 0.75µg,
 Lane 3: 0.50µg,
 Lane 4: 0.25µg.
 The gel was run at 135 volts for 1 hour. DNA bands were visualized by exposure to UV light.

PRODUCT	SIZE	CAT. NO.	SPECIAL
EZ-Vision Three	5 x 1mL	AMR-N313-KIT	\$129.00
EZ-Vision Three	0.3mL	AMR-N313-Q-SAMPLE	24.00
EZ-Vision Two	5 x 1mL	AMR-N650-KIT	129.00
EZ-Vision Two	0.3mL	AMR-N650-Q-SAMPLE	24.00
EZ-Vision One	5 x 1mL	AMR-N472-KIT	129.00
EZ-Vision One	0.5mL	AMR-N472-Q-0.5ML	24.00
EZ-Vision Sample Kit Includes EZ-Vision Three (1mL) and EZ-Vision One (1mL)	2 x 1mL	AMR-N473-2PK	55.00



Pre-mixed Acrylamide and bis-Acrylamide Solutions

For customized PAGE of protein

- Eliminate hazardous handling of powder
- Reproducible and consistent results

DESCRIPTION	COMPOSITION	SIZE	CAT. NO.	SPECIAL
Acryl/Bis™ 37.5:1, Solution	40% solution containing 38.96% (w/v) acrylamide and 1.04% (w/v) bis-acrylamide. Monomer to cross-linker ratio: 37.5:1	500mL	AMR-0254-500ML	\$51.00
Acryl/Bis™ 29:1, Solution	40% solution containing 38.67% (w/v) acrylamide and 1.33% (w/v) bis-acrylamide. Monomer to cross-linker ratio: 29:1	500mL	AMR-0311-500ML	60.00
Acryl/Bis™ 19:1, Solution	40% solution containing 38% (w/v) acrylamide and 2% (w/v) bis-acrylamide. Monomer to cross-linker ratio: 19:1	500mL	AMR-0496-500ML	46.20

NEXT GEL™

A REVOLUTION IN RESOLUTION

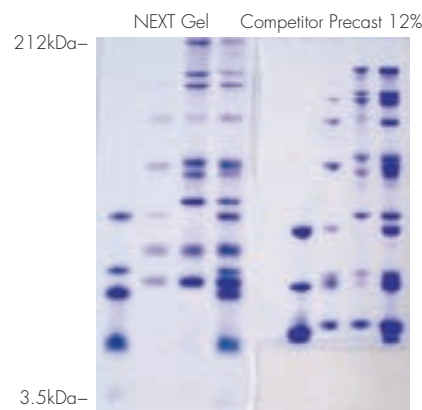


Imagine ... publication-quality gels the first time, every time!

DESCRIPTION	MOLECULAR WEIGHT SEPARATION RANGE	CAT. NO.	SPECIAL
NEXT Gel 5%*	30 – 500 kDa	AMR-M254-100ML	\$30.00
		AMR-M254-500ML	100.00
NEXT Gel 7.5%*	20 – 300 kDa	AMR-M255-100ML	30.00
		AMR-M255-500ML	100.00
NEXT Gel 10%*	10 – 200 kDa	AMR-M256-100ML	30.00
		AMR-M256-500ML	100.00
NEXT Gel 12.5%*	3.5 – 100 kDa	AMR-M257-100ML	30.00
		AMR-M257-500ML	100.00
NEXT Gel 15%*	2.5 – 100 kDa	AMR-M258-100ML	30.00
		AMR-M258-500ML	100.00
NEXT Gel Trial Kit Includes: each NEXT Gel concentration, 30mL; NEXT Gel running buffer, 250mL; sample loading buffer, 1mL		AMR-M261-KIT	40.00

* Includes NEXT Gel™ running buffer

- No stacking gel required!
- Resolve a 14.2kDa band from a 14.4kDa band on a mini-gel
- Cost-effective alternative to gradient gels
- >1-year room stability



Protein MW Markers (Low, Mid/Low, Wide and mixture of all 3) were loaded on a NEXT Gel (10%) and a comparable gel from a competitor. The NEXT Gel shows full range proteins resolved from 212kDa to 3.5kDa, without the need for gradient gels. The competitor gel provided satisfactory separation of proteins from 212kDa to 14kDa only, and with less resolution and clarity.

AMRESCO Agarose



Agarose SFR™

Super fine resolution, low melting agarose

Separation range: 20 – 2,000bp

Agarose LF™

Optimized for Large Fragment Electrophoresis (PFGE)

Separation range: 1,000 – 40,000bp

Agarose I™

All-purpose, high purity agarose

Separation range: 250 – 22,000bp

Agarose 3:1 HRB™

High resolution blend: ideal for PCR products

Separation range: 50 – 2,000bp

DESCRIPTION	SIZE	CAT. NO.	SPECIAL
Agarose I™ Biotechnology Grade	500g	AMR-0710-500G	\$342.00
	25g	AMR-E776-25G	57.00
	100g	AMR-E776-100G	182.00
Agarose 3:1 HRB™ Biotechnology Grade	250g	AMR-E776-250G	385.00
	25g	AMR-J234-25G	88.00
	100g	AMR-J234-100G	219.00
Agarose SFR™ Biotechnology Grade	250g	AMR-J234-250G	517.00
	25g	AMR-X174-25G	41.00
	100g	AMR-X174-100G	148.00
Agarose LF™ Biotechnology Grade	250g	AMR-X174-250G	329.00

Savant DNA120 SpeedVac® Concentrator

High performance concentration and drying of small-volume DNA/RNA samples

- Corrosion resistant, TEFLON®-coated chamber provides years of lasting service
- Built-in oil-free ETFE vacuum pump provides maintenance-free operation
- Integrated and compact design
- Extremely quiet operation
- Three temperature settings: ambient, medium (~43°C), high (~65°C)
- Dual digital timers for independent control of heat and run times
- Can accommodate up to 72 x 0.5mL microtubes or two shallow-well microplates (with optional RH2MP rotor)



Cat. No. SAV-DNA120-115

Mandel Scientific Company Inc. offers a complete range of vacuum concentration and freeze drying solutions. Please contact your Mandel representative or call Technical Support at 1-888-883-3636 for more information.

For pricing, please contact Mandel Scientific at 1-888-883-3636 or email technicalsupport@mandel.ca

Savant ISS110 SpeedVac® Concentrator

A high capacity DNA SpeedVac designed for efficient processing of large batches of DNA/RNA samples.

- ETFE-coated vacuum pump
- 4-litre, -50°C refrigerated vapour trap
- Temperature control: ambient, medium, high
- Accommodates up to 120 x 1.5mL microtubes (with optional RH120-11 rotor) and shallow-well microplates (with optional RH2MP rotor)
- Many optional rotors available
- System includes two GCF400 Glass Flasks and one RH64-11 rotor
- Recommended for processing of DNA/RNA and other samples in aqueous or non-aggressive solvents, such as methanol, ethanol and acetonitrile

Applications

- Aqueous solvents
- Non-aggressive organic solvents (ethanol, methanol, acetonitrile)
- Acid concentrations less than 1.0N (TFA, HCl, nitric acid)



Cat. No. SAV-ISS110-115

Classic Blue Film BX

- Double emulsion
- High signal sensitivity
- For autoradiography of ³²P, ³³P, ³⁵S, ¹²⁵I and ¹⁴C
- Publishable grade autoradiographs
- Optimized for chemiluminescence
- Use with calcium tungstate or blue rare earth screens

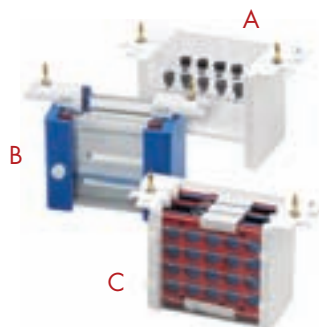


Classic Blue Film BX

DESCRIPTION	CAT. NO.	PRICE
CLASSIC BLUE FILM BX		
5 x 7", package of 100	MSF-BX57	\$99.00
8 x 10", package of 100	MSF-BX810	129.00
10 x 12", package of 100	MSF-BX1012	149.00
14 x 17", package of 100	MSF-BX1417	329.00

Enduro Vertical Electrophoresis Systems

- Modular design
- PAGE, electroblotting and 2D electrophoresis – simply by changing the inserts
- Quick and easy set up
- Wide range of accessories
- Accepts most pre-cast gels
- Power to electrodes disconnected upon lid removal
- Durable, leakproof buffer tank



A PAGE Insert

- Run up to four 10 x 10cm gels
- Accepts most pre-cast gels
- Easy to set pressure bars

B 2D Tube Gel Insert

- Gasketed ports for easy insertion and removal
- Capacity for 10 capillaries

C Blotting Insert

- High intensity, coiled electrode
- Blot up to 3 gels at one time

DESCRIPTION	CAT. NO.	PRICE	SPECIAL
Enduro PAGE System, with PAGE insert, buffer tank with leads and cooling pack	NLE-2010-P	\$680.00	\$510.00
Enduro PAGE Electroblotting System, with blotting insert and PAGE system components	NLE-2010-PB	899.00	674.25
Enduro PAGE 2D System, with 2D insert and PAGE system components	NLE-2010-P2	933.00	699.75
Enduro Electroblotting System, with buffer tank and blotting insert	NLE-2010-BT	595.00	446.25
Electroblotting Module only for use with Enduro PAGE System	NLE-2010-BM	421.00	315.75

Additional spacers, combs and plates are available.
Please contact Technical Support at 1-888-883-3636
or e-mail technicalsupport@mandel.ca

Enduro Horizontal Electrophoresis Systems

- Available in a variety of sizes from mini to maxi
- Shape of lid encourages recycling of condensed buffer
- Removal of safety lid disconnects power from the system
- Side tabs and pressure pads for easy, safe lid removal
- Protective electrode cassettes



NAME	DESCRIPTION	GEL SIZE	UNIT SIZE	BUFFER VOLUME	MAX. SAMPLES	SUPPLIED COMBS	CAT. NO.	PRICE	SPECIAL
Enduro 7.7	Ideal for quick runs and low to medium throughput	7 x 7cm	9 x 21 x 9cm	225mL	32	2 x 8-tooth	NLE-1007-7	\$340.00	\$255.00
Enduro 7.10	Small footprint with longer gel for higher sample throughput or better resolution	7 x 10cm	9 x 21 x 9cm	225mL	64	3 x 8-tooth	NLE-1007-10	354.00	265.50
Enduro 10.10	Ideal for quick checks of samples from PCR products; medium throughput	10 x 10cm	12.5 x 22 x 9cm	300mL	100	2 x 10-tooth*	NLE-1010-10	369.00	276.75

*Denotes multichannel compatible combs

Enduro™ Power Supplies

- Operating modes include constant voltage, or constant current with automatic crossover
- 250V model also offers constant power operating mode
- Short circuit and over current/over voltage protection
- No load and load change detection system
- Programming includes option for automatic recovery after power failure
- 3 YEAR WARRANTY

DESCRIPTION	CAT. NO.	PRICE	SPECIAL
Model 300V	NLE-0303	\$519.00	\$389.25
Model 250V	NLE-0203	921.00	690.75



Model H5 Electrophoresis System

Model H5 is designed for the separation of nucleic acids or proteins in submerged 11 × 14cm agarose gels



- Two buffer recirculation ports with fittings for recirculating the buffer
- Red well visualization strips aid in sample loading
- Removable UVT transparent gel tray aids in staining and photography
- Safety lid with attached power cords

Model H5 Horizontal Gel Electrophoresis Apparatus

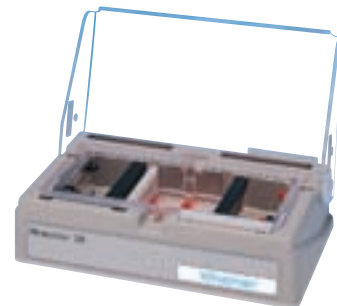
Complete with chamber, power cords, safety lid, UV-transparent gel tray 11 × 14cm, 2 aluminum gel casting dams, 1 × 14-tooth comb (1mm thick), 1 × 14-tooth comb (2mm thick), buffer recirculation option and manual. Other combs and components available separately.

DESCRIPTION	CAT. NO.	PRICE	SPECIAL
Model H5 Horizontal Gel Electrophoresis Apparatus	BM-21087010	\$648.00	\$486.00
Replacement electrode	BM-21087036	112.00	84.00
UVT Tray (11.0 x 14.0 x 2.0cm)	BM-11084019	128.00	96.00

Horizon® 58

Electrophorese submerged agarose mini-gels (5.7 × 8.3cm) for the rapid separation of nucleic acids

- Electrophoresis completed in as little as 30 min.
- Patented drop-in casting dams allow gel to be cast in place without the use of tape
- Casting components withstand boiling agarose temperatures
- Safety interlock lid
- Removable gel deck with red visualization strips to aid in sample loading
- Removable buffer tray for easy cleaning



DESCRIPTION	CAT. NO.	PRICE	SPECIAL
Horizon® 58 Gel Electrophoresis Apparatus	BM-41060039	\$764.00	\$573.00
Horizon® 58 Gel Casting System*	BM-21065040	288.00	216.00
Buffer tray	BM-21065024	227.00	170.25
Replacement electrode	BM-21059027	48.00	36.00
Gel casting tray	BM-21065164	60.00	45.00

* The Horizon® 58 Gel Casting System is a stand-alone system for casting 5.7 x 8.3cm agarose gels while the Horizon 58 apparatus is in use.

Horizon® 11•14

Electrophorese submerged agarose gels (11 × 14cm) for the rapid separation of nucleic acids

- Patented drop-in casting dams allow gel to be cast in place without the use of tape
- Casting components withstand boiling agarose temperatures
- Safety interlock lid
- Removable gel deck with red visualization strips to aid in sample loading
- Adjustable leveling feet and bull's eye level ensure uniform gel thickness for reproducible separation patterns
- Quick-connect fittings allow easy connection for buffer recirculation



DESCRIPTION	CAT. NO.	PRICE	SPECIAL
Horizon® 11•14	BM-11068020	\$880.00	\$660.00
Replacement electrode	BM-11068061	127.00	95.25
UVT Tray (11.0 x 14.0 x 2.0cm)	BM-11084019	128.00	96.00

BioSpec-nano

UV-Vis Spectrophotometer

Quick and simple nucleic acid quantitation

- Ultra-small sample volumes: 1 – 2µL
- Automated analysis
- Fast analysis – measurement takes seconds
- Xenon flash light source
- DNA & RNA quantitation



 SHIMADZU

BioSpec-mini

UV-Vis Spectrophotometer



- Double and single-stranded DNA and RNA quantitation
- Oligo length and sequence-based quantitation
- Protein assays: Lowry, UV, BCA, Bradford
- Full spectral data acquisition from 190nm to 1100nm

Axima MALDI-TOF Spectrometers

4 New Systems with varying applications



Axima Assurance

- Axima Assurance – Linear MALDI-TOF
- Axima Confidence – Taking MALDI-TOF MS beyond the standard
- Axima Performance – True high energy MALDI MS/MS
- Axima Resonance – Unique MALDI QIT TOF MS
- MegaTOF™ MegaDalton MALDI – New high mass MALDI detects intact complexes up to 1.5MDa

CHIP-1000 Tissue Imager



- Precisely delivers pico-liter volumes of enzymes, antibodies or MALDI-TOF matrices
- Ideal for MALDI tissue imaging/profiling, nanowestern analyses and multiple reagent printing onto target substrates

Perfinity Workstation

Multi-column apparatus that automates protein and mass spec sample separations

- Serum to purified peptides in <10 min.
- Hands free operation – fully automated
- Significant reduction in cost per sample
- Easily customizable



Protein Sequencer PPSQ

Achieving greater simplicity and reliability in the determination of Amino Acid Sequences



- Analytical Stability – Isocratic analysis gives excellent baseline stability and retention time reproducibility
- Re-cycle and re-use mobile phase to reduce running costs and liquid waste in the analysis of PTH-amino acids using isocratic mode
- Easy-to-use software – simple operation and easy-to-use data analysis functions